

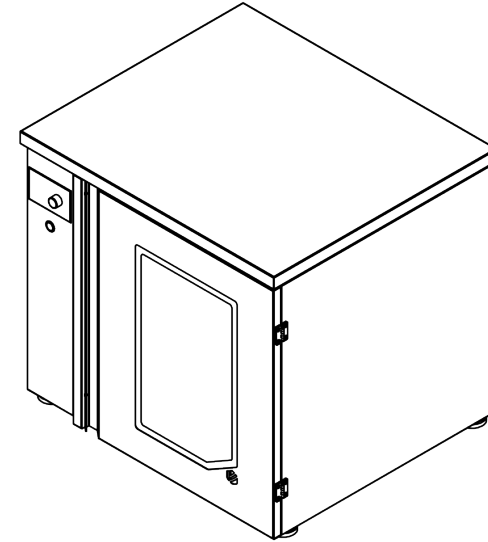
# FORGE PROVER OVEN USER MANUAL

## LIMITED WARRANTY

All equipment which is sold under FORGE trademark and used for commercial purposes is warranted against defects in materials and workmanship. The warranty runs for two years from the date of original installation and is for the benefit of the original purchaser only. All other Warranties, expressed or implied, statutory or otherwise, including without limitations any implied Warranty of Merchantability or fitness for purpose are excluded. The Seller shall in no event be liable for direct, indirect or consequential damages in connection with FORGE commercial products.

The Seller's obligation under this Warranty is limited to the repair of defects without charge. Defective units must be taken or shipped, transportation charges prepaid, to FORGE.

This Warranty is not effective if damage occurs because of accident, carelessness, improper installation, lack of proper set-up, supervision when required or if the equipment is installed or operated in any manner contrary to the installation and operating instructions. In these cases, repairs will be made at a reasonable cost. Work performed by unauthorized personnel or unauthorized service agencies using non FORGE spares voids this Warranty.



## INSTALLATION OPERATION AND CARE OF THE FORGE PROVER OVEN MODELS: FPO0010

## QUALITY GUARANTEE

ALL FORGE EQUIPMENT COMES WITH A  
TWO YEAR WARRANTY ON COMPONENTS  
AND DEFECTIVE WORKMANSHIP.

## UNPACKING

Unpack the product and check for any damage incurred during transit. This should be reported to the responsible carrier, railway or postal authority, and a request for a damage report should be made.



THESE INSTRUCTIONS MUST BE FOLLOWED FOR US TO GUARANTEE OUR FULL SUPPORT OF YOUR CLAIM FOR PROTECTING AGAINST LOSS FROM CONCEALED DAMAGE. THE FORM FOR FILING SUCH A CLAIM WILL BE PROVIDED BY THE CARRIER.

## GENERAL INSTALLATION AND OPERATION INSTRUCTIONS

1. Before leaving the factory, prover ovens have been operationally final quality checked.
2. Remove the plastic material protecting the stainless steel panels.
3. The oven requires a single phase 230v connection.
4. Ensure that the bleeding drain cock is fully closed.
5. Connect the water supply to the unit's water 3/4" inlet fitting.
6. Plug the unit into the 230V power supply. All lights will come on momentarily.
7. Ensure that the door is fully closed.
8. Press the silver knob on the digital controller for 2-3 seconds. The units internal light and fan will switch on.
9. When the water level detector detects that the water level is low in the tank, the solenoid sensor will switch on and fill the tank with water to the required level and automatically shut the inlet valve off When full. This will continuously fill up as needed. A beep will sound, and the humidifier button light will switch off, when the water level is too low.
10. Set the timer on the control panel, by touching the timer Area, then rotating the knob to the required time in minutes. Press the silver knob to store the timer setting.

LEGEND  
FORGE PROVER OVEN  
FPO0010

**MODEL: FORGE PROVER OVEN**  
**MODEL CODE : FPO0010**

Part No.	Description
1	30W LED DRIVER
2	FUSE HOLDER
3	PIPE
4	FAN RRL152/0020 B90
5	TEMPERATURE CONTROL SWITCH SDI
6	PUSH BUTTON SWITCH FLM22-11FJZ
7	ELECTRONIC LIQUID LEVEL CONTROL / DIN MOUNT 11 PIN BASE ES11CNER
8	HOSE CLAMP
9	RUNNER LEFT HAND SIDE
10	RUNNER RIGHT HAND SIDE
11	SLIDING DOOR CONTACT
12	LED LIGHT FITTING 77.116.1502
13	DOOR
14	OUTER GLASS 420X620 4MM CLEAR
15	40X54 ZDC BK PC BUTT HINGE M6
16	RUBBER FOOT M10 MILD STEEL
17	SPIRAL ELEMENT 1000W 230V 530M
18	WATER LEVEL SENSOR
19	MIST MAKER RSK M-12L AC 220V/5
20	BLEEDING DRAIN COCK
21	SOLENOID VALVE 220V 50/60 HZ 9
22	WIEDMULLER TERMINAL STRIP 3076 11

GENERAL INSTALLATION AND OPERATION INSTRUCTIONS

11. Set the temperature on the control panel to the required heat, by Touching the temperature area on the panel first, then turning the Knob to the required temperature. (40°C recommended)  
Press the knob again to store the temperature setting.
12. Press the push button switch, marked as "humidity" below the Digital controller to activate the mist maker. This provides the Moisture to the oven cavity.
13. When the door is opened the internal light will automatically switch Off.
14. Once the set time has run out, the timer will ring / make a beeping Noise.

## SAFETY



## WARNING

**Burn Hazard.**

Do not touch hot food, liquid or heating surfaces while equipment is heating or operating.

Hot surfaces and food can burn skin.  
Allow the hot surfaces to cool before handling.

## CLEANING

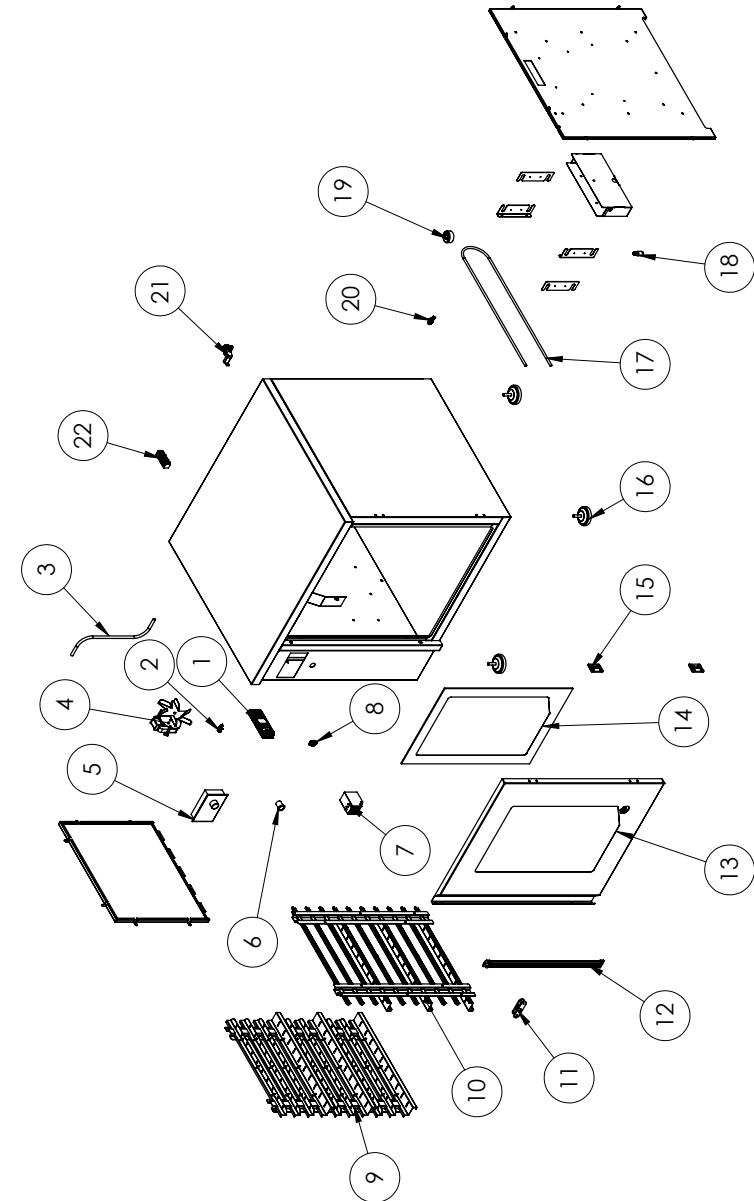
1. Always ensure that the unit is disconnected from the main power supply before cleaning.
2. The unit should not be cleaned with a water jet or immersed in water. Use only a damp cloth or sponge dipped in soapy water.
3. Always clean equipment thoroughly before first use. However, do not use chlorine or chloride – based products to clean the unit. These may lead to corrosion and pitting and will result in voiding the warranty on the unit.
4. Wipe off the unit with a dry cloth and wait at least half an hour before re – connecting to the main power outlet.



CLEAN THE STAINLESS STEEL WITH WATER AND SOAP. AVOID THE USE OF DETERGENTS CONTAINING ABRASIVE SUBSTANCES. ALWAYS RINSE WELL AND DRY CAREFULLY AFTER CLEANING. DO NOT USE PRODUCTS CONTAINING AGGRESSIVE CHEMICALS, ACIDS OR CHLORINE AS THIS WILL INVALIDATE THE WARRANTY

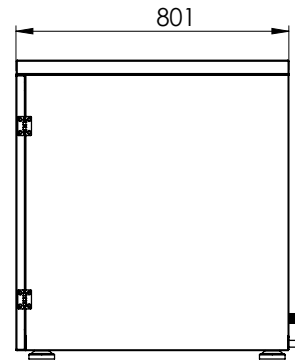
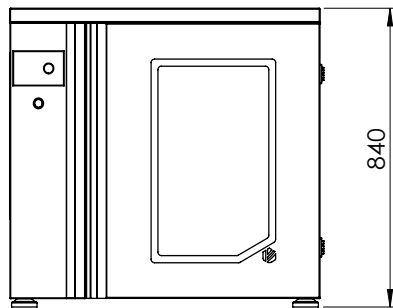
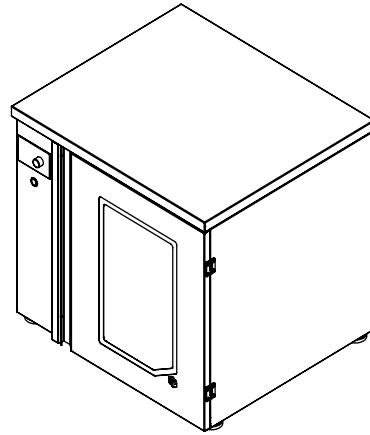
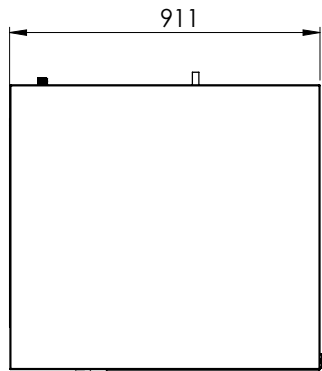


ALWAYS ENSURE THAT THE UNIT IS DISCONNECTED FROM THE MAIN SUPPLY BEFORE CLEANING

EXPLODED DIAGRAM  
FORGE PROVER OVEN  
FPO0010



POSITIONING DIAGRAM  
FORGE PROVER OVEN  
FPO0010



ELECTRICAL CONNECTION INFORMATION

MODEL	DESCRIPTION	VOLTS (V / Hz)	POWER (W)
FPO0010	PROVER OVEN	230/50 1P	1000



IT IS ESSENTIAL TO MAKE SURE THAT THE INCOMING VOLTAGE IS THE SAME AS THE RATED VOLTAGE OF THE OF THE UNIT AS FOUND ON THE SERIAL PLATE. THE SERIAL PLATE IS LOCATED AT THE REAR OF THE UNIT ADJACENT TO THE INCOMING CABLE ENTRY.