

# FORGE



SCAN TO GO TO  
WARRANTY REGISTRATION

## **INSTRUCTION** INSTALLATION, OPERATION & MAINTENANCE **MANUAL**

 ALL FORGE EQUIPMENT  
IS PROUDLY  
MANUFACTURED IN  
SOUTH AFRICA

4-INS-FSP1003



ALL FORGE EQUIPMENT COMES WITH A  
TWO YEAR WARRANTY ON COMPONENTS  
AND DEFECTIVE WORKMANSHIP.

**REGISTER ONLINE TODAY**

Register your warranty on-line at [www.forgequip.com](http://www.forgequip.com) today and learn how to get the best out of your FORGE product, tips to care for your FORGE product for long lasting performance, exciting recipes and more.

**NO WEB ACCESS?**

If you do not have access to the Web, register by completing this form and faxing it to the FORGE head office in South Africa. Fax: +27 11 474 1630

**ONLY COMPLETE IF YOU DO NOT HAVE WEB ACCESS**

Company \_\_\_\_\_

Name \_\_\_\_\_

Surname \_\_\_\_\_

Telephone \_\_\_\_\_

Cellphone \_\_\_\_\_

Email Address \_\_\_\_\_

Country \_\_\_\_\_

Postal address \_\_\_\_\_

\_\_\_\_\_

\_\_\_\_\_

Anvil products purchased \_\_\_\_\_

Code (see box label) \_\_\_\_\_

Serial number (see back of machine) \_\_\_\_\_

**INTENDED USE**

- Full-Service restaurant
- Coffee Shop / Deli
- Fast Food Outlet
- Hotel
- Bed & Breakfast
- School Cafeteria

- Institutional Cafeteria
- Corporate Catering
- Private Use
- Franchisor
- Convenience Store
- Other



## LIMITED WARRANTY

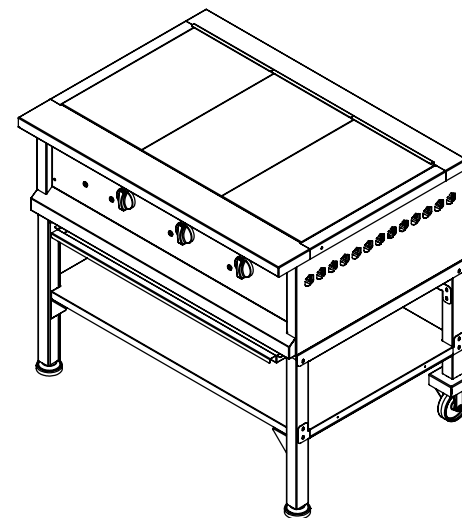
All equipment which is sold under FORGE trademark and used for commercial purposes is warranted against defects in materials and workmanship. The warranty runs for two years from the date of original installation and is for the benefit of the original purchaser only. All other Warranties, expressed or implied, statutory or otherwise, including without limitations any implied Warranty of Merchantability or fitness for purpose are excluded. The Seller shall in no event be liable for direct, indirect or consequential damages in connection with FORGE commercial products.

The Seller's obligation under this Warranty is limited to the repair of defects without charge. Defective units must be taken or shipped, transportation charges prepaid, to FORGE.

This Warranty is not effective if damage occurs because of accident, carelessness, improper installation, lack of proper set-up, supervision when required or if the equipment is installed or operated in any manner contrary to the installation and operating instructions. In these cases, repairs will be made at a reasonable cost. Work performed by unauthorized personnel or unauthorized service agencies using non FORGE spares voids this Warranty.

4-INS-FSP1003

## HEAVY DUTY STOVE FORGE SOLID TOP - ELECTRIC



INSTALLATION OPERATION AND CARE OF  
HEAVY DUTY STOVE FORGE - SOLID TOP - ELECTRIC  
MODELS: FSP1003

## QUALITY GUARANTEE

ALL FORGE EQUIPMENT COMES WITH A  
TWO YEAR WARRANTY ON COMPONENTS  
AND DEFECTIVE WORKMANSHIP.

## UNPACKING

Unpack the product and check for any damage incurred during transit. This should be reported to the responsible carrier, railway or postal authority, and a request for a damage report should be made.



THESE INSTRUCTIONS MUST BE FOLLOWED FOR US TO GUARANTEE OUR FULL SUPPORT OF YOUR CLAIM FOR PROTECTING AGAINST LOSS FROM CONCEALED DAMAGE. THE FORM FOR FILING SUCH A CLAIM WILL BE PROVIDED BY THE CARRIER.

## GENERAL INSTALLATION AND OPERATION INSTRUCTIONS

1. Before using the griller, turn the knob to maximum temperature. Allow the griller to burn in for +/-30 minutes. You will notice smoke appearing due to the protective coatings burning in. This is normal.
2. After the burning in period has lapsed, turn the temperature control knob down to the desired operating temperature. Grease plates generously with butter or oil.
3. Never allow excess fat or oil to build up as this will result in the building up carbon on the plates. This can be removed with a scraper or grill brick.
4. The griller is provided with two heavy duty adjustable feet to enable the slope of the griller plate to be set towards the fat drain tray. The back legs of the unit are fitted with heavy duty nylon casters for ease of movement and for cleaning.

## LEGEND

HEAVY DUTY STOVE FORGE - SOLID TOP - ELECTRIC  
FSP1003HEAVY DUTY STOVE FORGE - SOLID TOP - ELECTRIC - 3 BURNER  
MODEL CODE : FSP1003  
EXPLODED LEGEND REV.0

Part No.	Stock Code	Description
1	82-FSP0003-SS-SLDPLA	SOLID TOP PLATES
2	5-4000W-HDGRILLER	4000W ELEMENT
3	82-FGE9-MS-ECBKT	ELEMENT CLAMP
4	82-FGE9-MS-GECHOV	INSULATION COVER
5	82-FSP1003-SS-FTASS	TOP FRAME
6	82-FSP1003-SS-FPAN	FASCIA PANEL
7	1-THERM-TSA7009	THERMOSTAT
8	1-PL-FL1M-220-12RED	PILOT LIGHT
9	3-KNOB-APEX / 3-KI-AXIS	CONTROL KNOB
10	82-FSP0003-SS-DTRAY	DRIP TRAY
11	82-FSP1003-SS-BDYASS	BODY
• 12	3-RF-COR1005	RUBBER FOOT
13	7-PW-FGE0900	CASTOR
14	82-FSP0003-SS-FTASS	FRAME ASSEMBLY

1. **Power On:**
  - Ensure the stove is properly connected to a suitable power outlet.
  - Turn the control knob for the plate you wish to use to the desired heat setting.
2. **Heat Adjustment:**
  - Each plate has a control knob for adjusting the heat level.
  - Turn the knob clockwise to increase the heat and counterclockwise to decrease it.
3. **Turning Off:**
  - To turn off a plate, turn the control knob to the “Off” position.
  - Ensure the plate has cooled down before cleaning or leaving unattended.



TIP : COOKING AT A HIGHER TEMPERATURE  
WILL NOT REDUCE YOUR COOKING TIME !  
IT WILL PRODUCE UNSATISFACTORY RESULTS.



# WARNING

## Burn Hazard.

Do not touch hot food, liquid or heating surfaces while equipment is heating or operating

Hot surfaces and food can burn skin. Allow the hot surfaces to cool before handling

## CLEANING

1. Always ensure that the unit is disconnected from the main power supply before cleaning.
2. The unit should not be cleaned with a water jet or immersed in water. Use only a damp cloth or sponge dipped in soapy water.
3. Always clean equipment thoroughly before first use. However, do not use chlorine or chloride – based products to clean the unit. These may lead to corrosion and pitting and will result in voiding the warranty on the unit.
4. Wipe off the unit with a dry cloth and wait at least half an hour before re – connecting to the main power outlet.

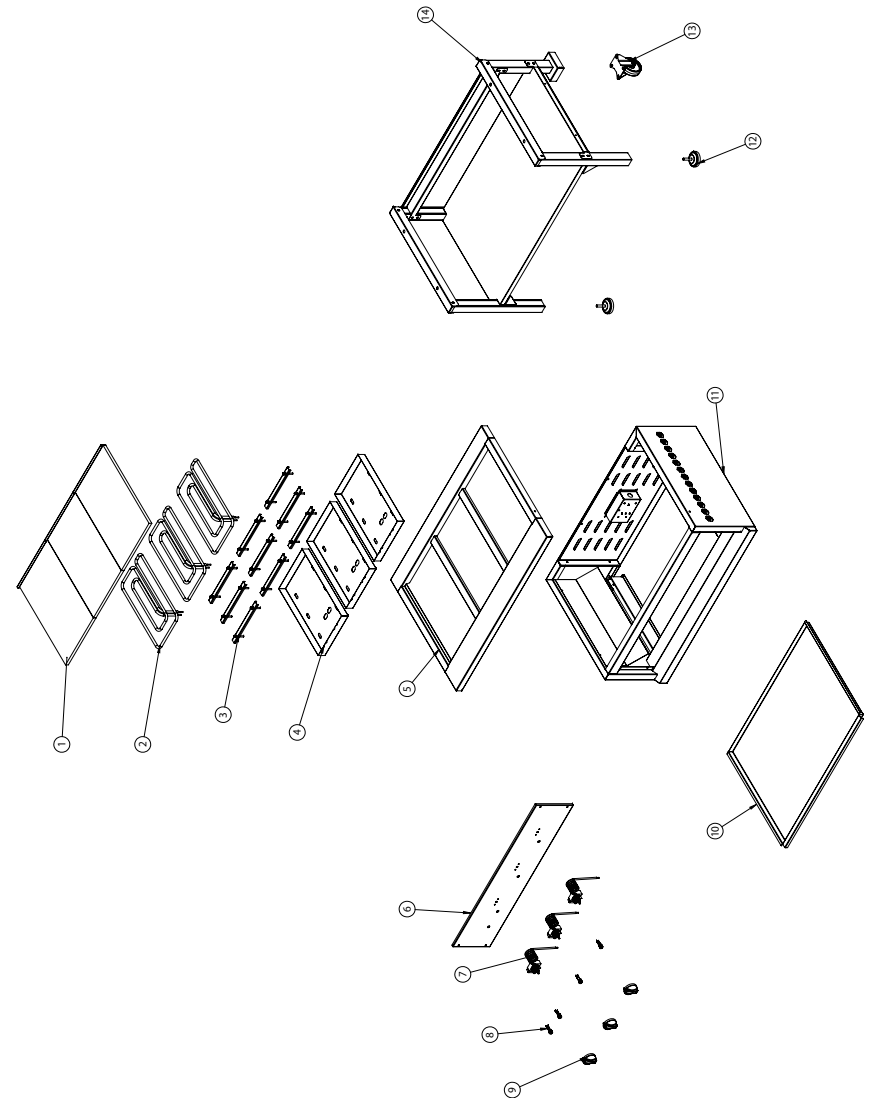


CLEAN THE STAINLESS STEEL WITH WATER AND SOAP. AVOID THE USE OF DETERGENTS CONTAINING ABRASIVE SUBSTANCES. ALWAYS RINSE WELL AND DRY CAREFULLY AFTER CLEANING. DO NOT USE PRODUCTS CONTAINING AGGRESSIVE CHEMICALS, ACIDS OR CHLORINE AS THIS WILL INVALIDATE THE WARRANTY

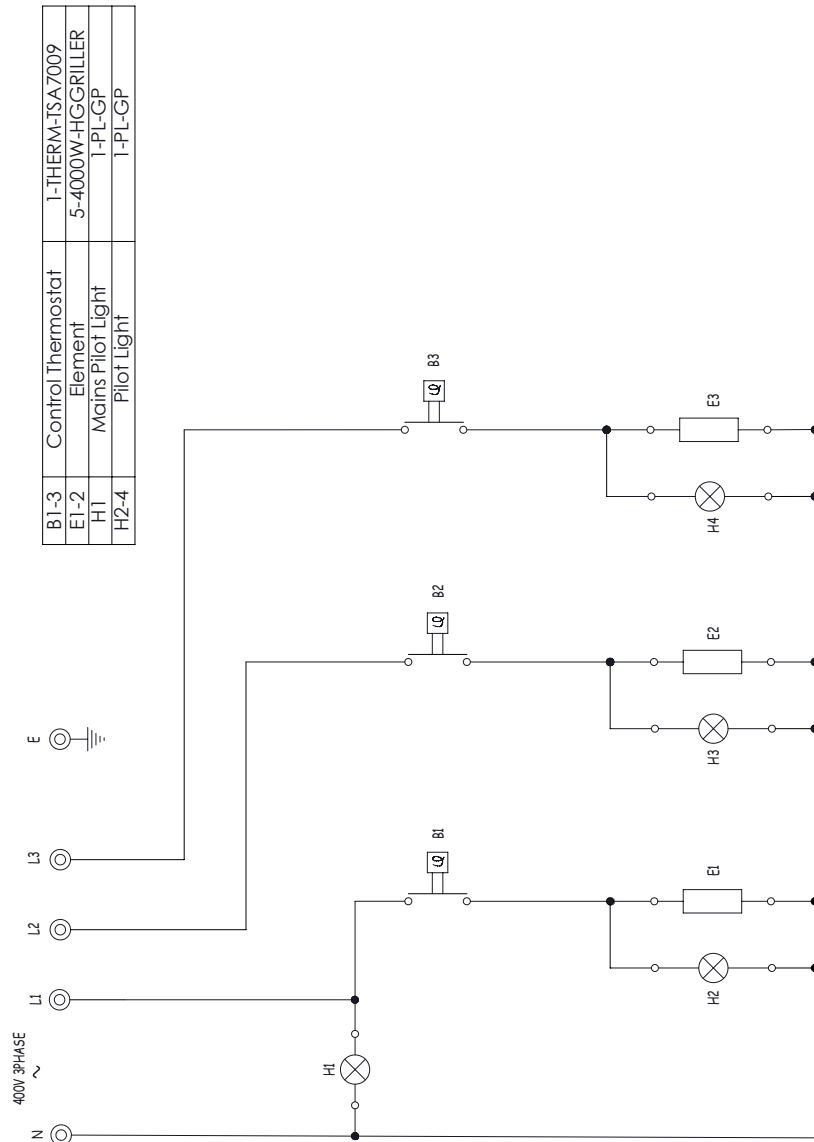


ALWAYS ENSURE THAT THE UNIT IS DISCONNECTED FROM THE MAIN SUPPLY BEFORE CLEANING

## EXPLODED DIAGRAM HEAVY DUTY STOVE FORGE - SOLID TOP - ELECTRIC FSP1003



**WIRING DIAGRAM**  
**HEAVY DUTY STOVE FORGE - SOLID TOP - ELECTRIC**  
**FSP1003**



## WARNING

**Electric Shock Hazard.**  
 Keep water and other liquids from entering the inside of the equipment. Liquid inside the equipment could cause an electrical shock.

Do not spray water or cleaning products. Liquid could contact the electrical components and cause a short circuit or an electrical shock.  
 Do not use equipment if power cord is damaged or has been modified.

**SAFETY**

**READ ALL INSTRUCTIONS BEFORE USE. FAILURE TO FOLLOW THESE PRECAUTIONS COULD RESULT IN INJURY TO YOURSELF AND OTHERS**

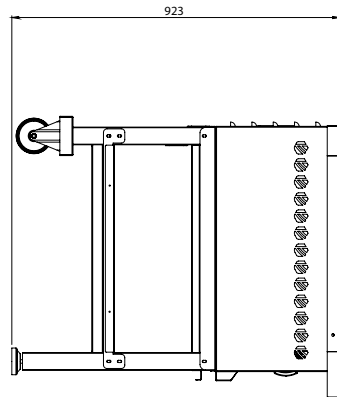
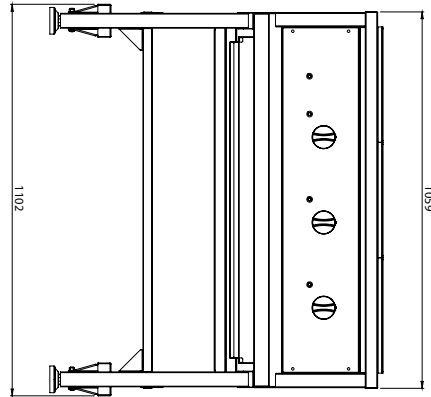
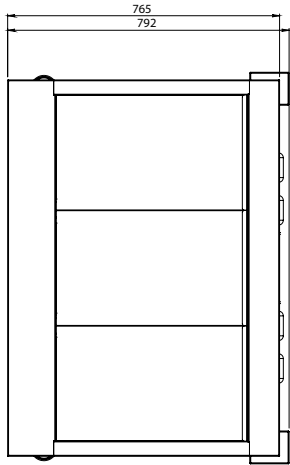
1. When this appliances is to be positioned in close proximity to a wall, partitions, kitchen furniture, decorative finishes, etc. it is recommended that they be made of non-combustible material. If not, they shall be clad with a suitable non-combustible heat insulating material, and the closest attention be paid to fire prevention regulations.

**DO NOT OVERLOAD THE CIRCUIT.**

2. Ensure that the equipment and the power supply cord does not come into contact with hot surfaces.
3. Supervision is necessary when the appliance is used in close proximity to children.
4. Use only earthed outlets matching the serial plate voltage.
5. Have equipment installed by a qualified personnel in accordance with local codes and ordinances.
6. Use equipment in a flat level position.
7. Do not operate unattended
8. The equipment may be hot, even though the pilot light is not on.
9. Do not operate if equipment has been damaged or is malfunctioning in any way.
10. This appliance is designed to run only on alternating current

**(A.C.) DO NOT CONNECT TO DIRECT CURRENT (D.C)**

POSITIONING DIAGRAM  
HEAVY DUTY STOVE FORGE - SOLID TOP - ELECTRIC  
FSP1003



## ELECTRICAL CONNECTION INFORMATION



IT IS ESSENTIAL TO MAKE SURE THAT THE INCOMING VOLTAGE IS THE SAME AS THE RATED VOLTAGE OF THE OF THE UNIT AS FOUND ON THE SERIAL PLATE. THE SERIAL PLATE IS LOCATED AT THE REAR OF THE UNIT ADJACENT TO THE INCOMING CABLE ENTRY.